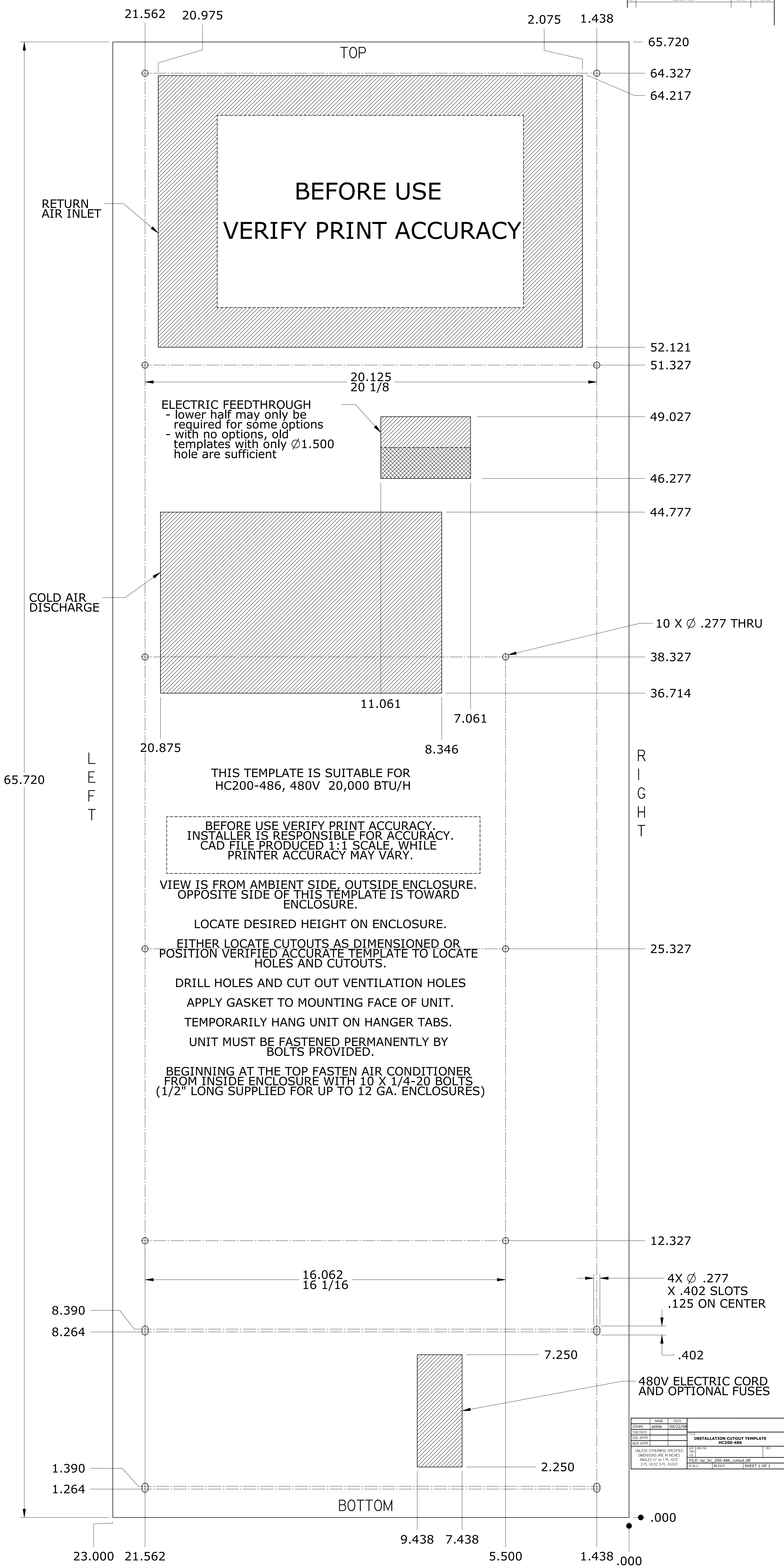


REVISION HISTORY		
REV	DESCRIPTION	DATE



**BEFORE USE
VERIFY PRINT ACCURACY**

ELECTRIC FEEDTHROUGH
 - lower half may only be required for some options
 - with no options, old templates with only $\varnothing 1.500$ hole are sufficient

THIS TEMPLATE IS SUITABLE FOR
 HC200-486, 480V 20,000 BTU/H

BEFORE USE VERIFY PRINT ACCURACY.
 INSTALLER IS RESPONSIBLE FOR ACCURACY.
 CAD FILE PRODUCED 1:1 SCALE, WHILE
 PRINTER ACCURACY MAY VARY.

VIEW IS FROM AMBIENT SIDE, OUTSIDE ENCLOSURE.
 OPPOSITE SIDE OF THIS TEMPLATE IS TOWARD
 ENCLOSURE.

LOCATE DESIRED HEIGHT ON ENCLOSURE.

EITHER LOCATE CUTOUTS AS DIMENSIONED OR
 POSITION VERIFIED ACCURATE TEMPLATE TO LOCATE
 HOLES AND CUTOUTS.

- DRILL HOLES AND CUT OUT VENTILATION HOLES
- APPLY GASKET TO MOUNTING FACE OF UNIT.
- TEMPORARILY HANG UNIT ON HANGER TABS.
- UNIT MUST BE FASTENED PERMANENTLY BY BOLTS PROVIDED.

BEGINNING AT THE TOP FASTEN AIR CONDITIONER
 FROM INSIDE ENCLOSURE WITH 10 X 1/4-20 BOLTS
 (1/2" LONG SUPPLIED FOR UP TO 12 GA. ENCLOSURES)

NAME	DATE	TITLE
DRAWN: atrtle	09/22/08	INSTALLATION CUTOUT TEMPLATE
CHECKED:		HC200-486
ENG APPR:		
MGR APPR:		

UNLESS OTHERWISE SPECIFIED
 DIMENSIONS ARE IN INCHES
 ANGLES 90° or PL. UNLESS
 2 PL. 10.02 3 PL. 10.010

SCALE	WEIGHT	SHEET 1 OF 1