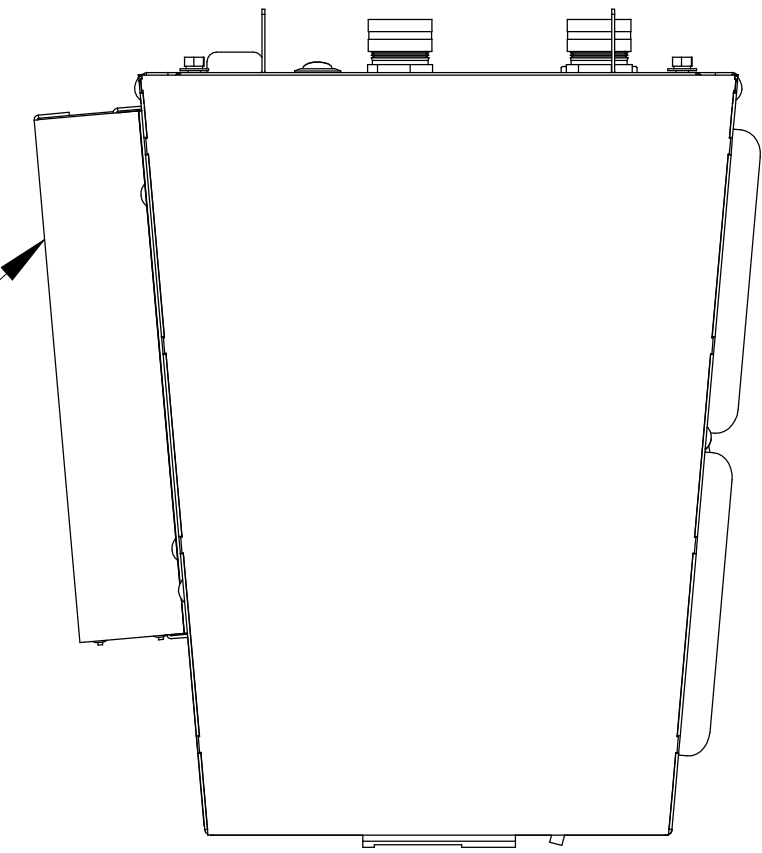
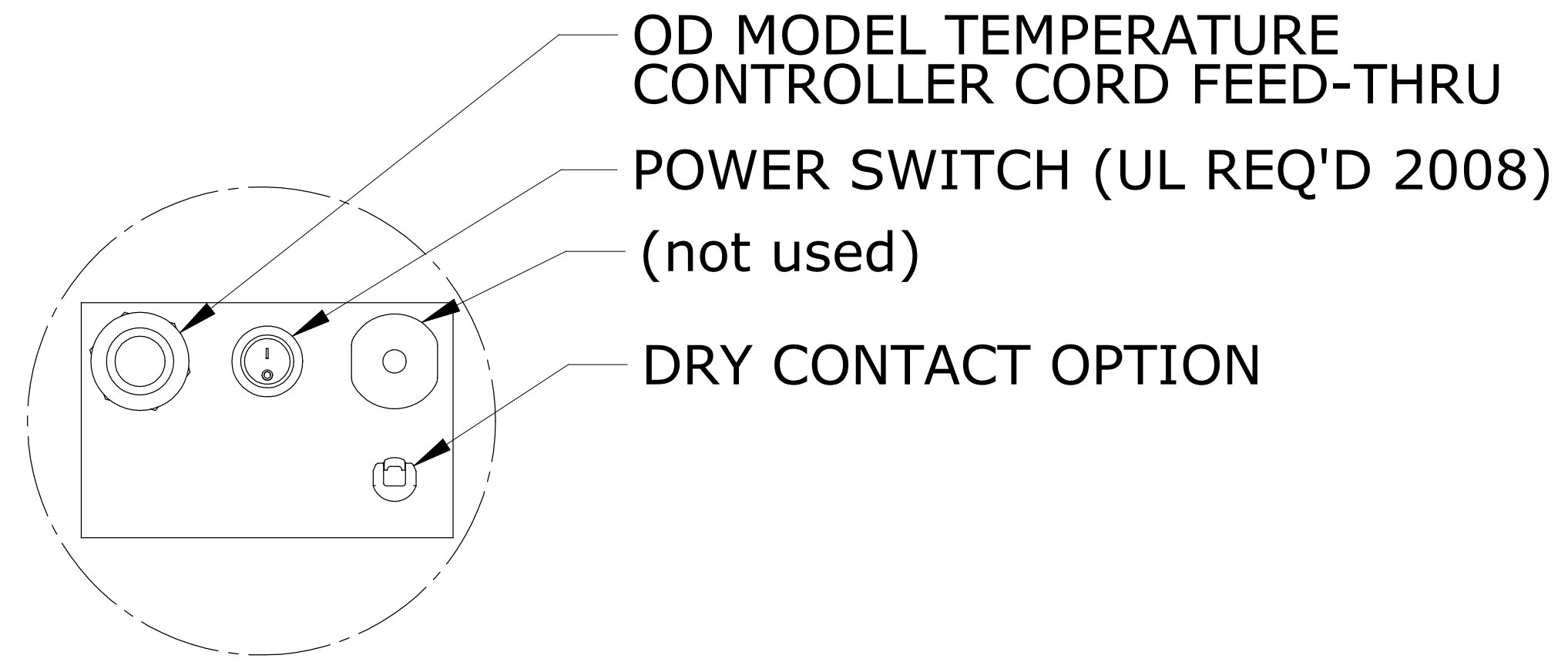


OPTIONAL 2" FILTER

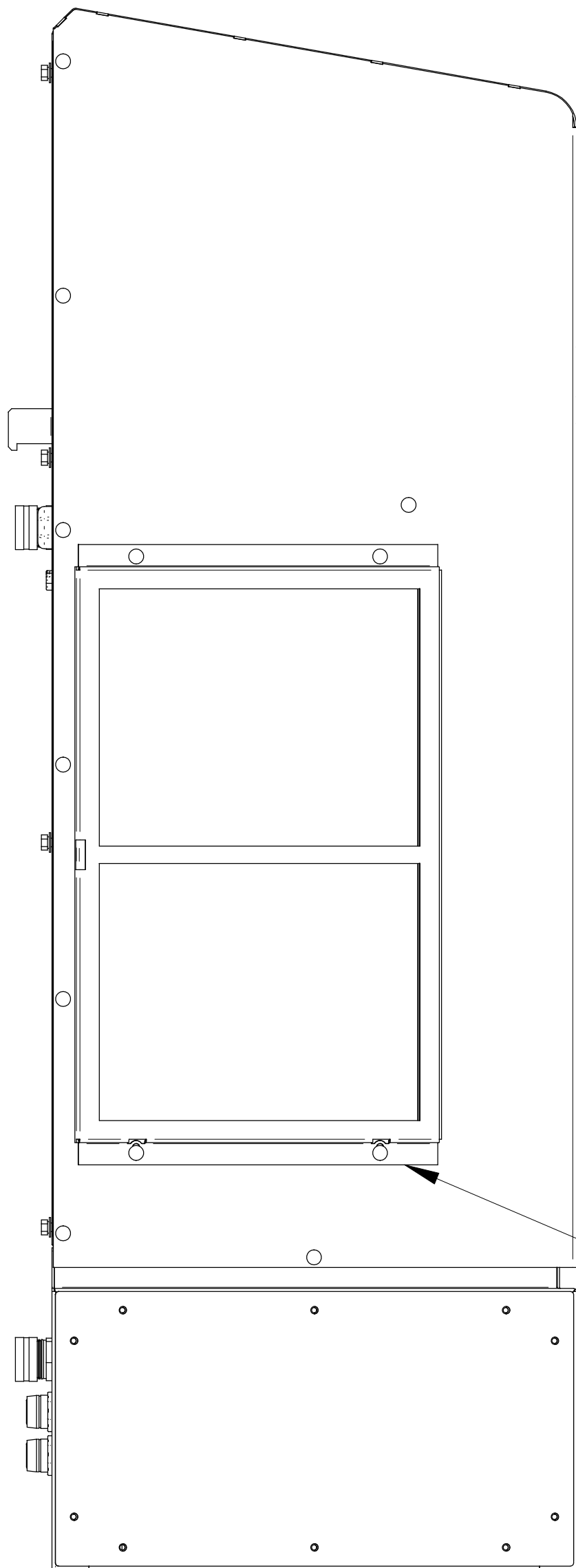


LOUVERS
MAY NOT BE
PRESENT ON
OLDER MODELS

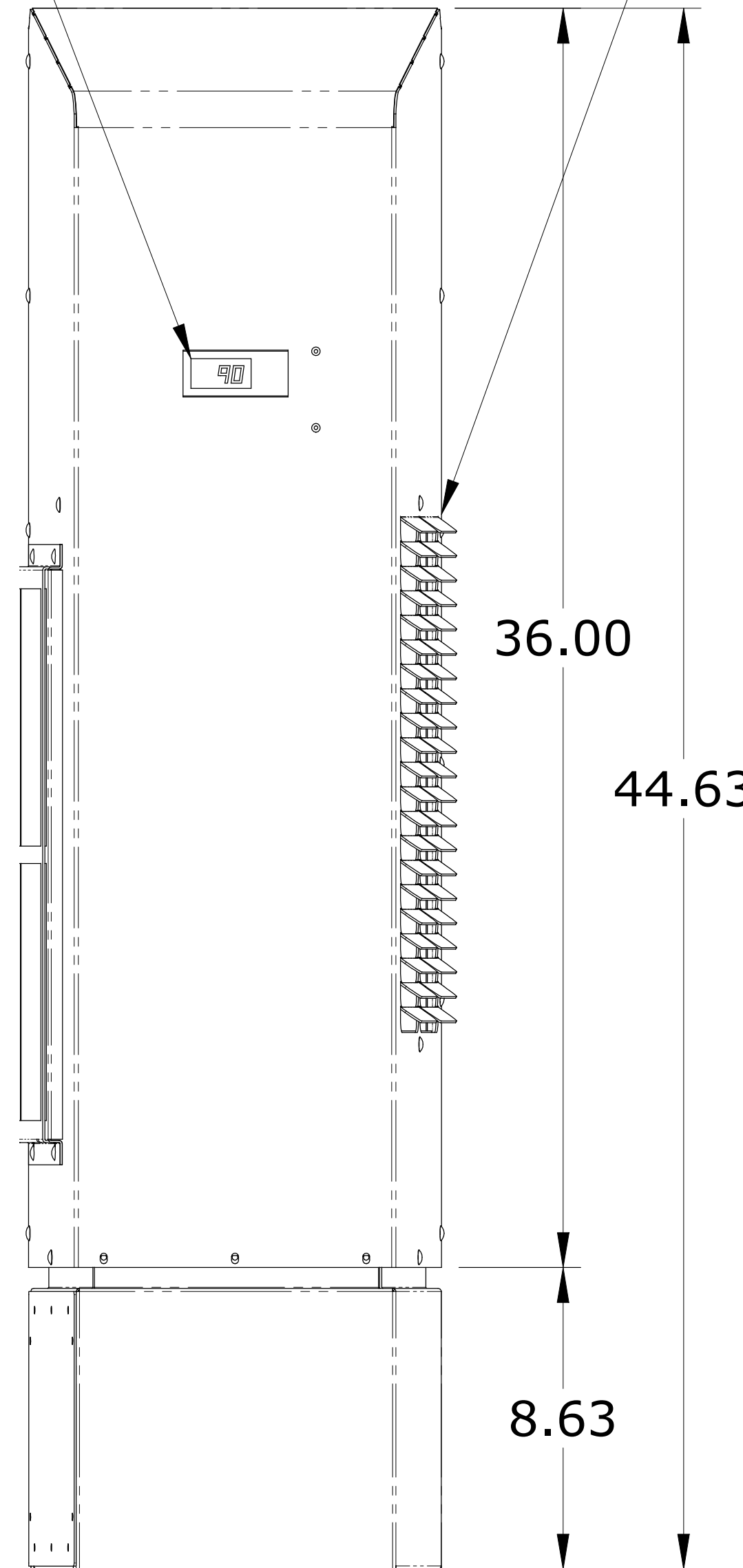


DETAIL A
2:1

DIGITAL
TEMPERATURE
CONTROLLER



AMBIENT
AIR INTAKE,
WASHABLE
FILTER



11.80

36.00

44.63

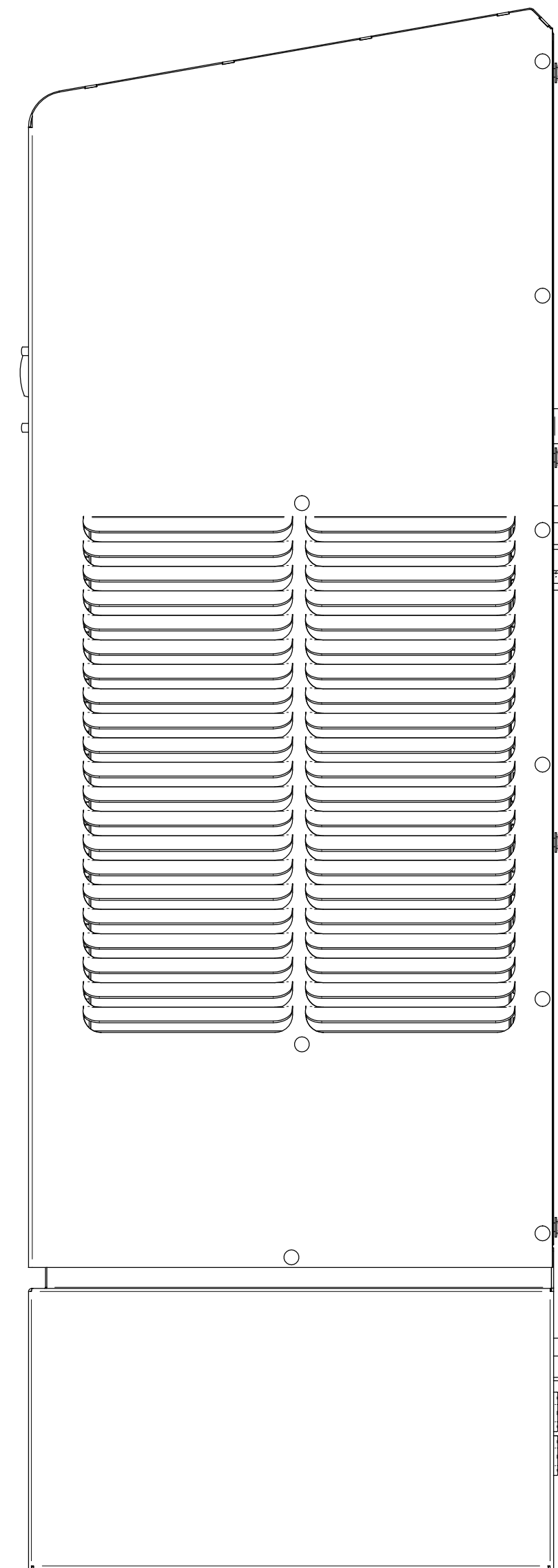
8.63

1:1

CONDENSATE EMERGENCY OVERFLOW
11/16-16 STRAIGHT THREAD
MAXIMUM THREAD DEPTH .31"

COLD
AIR
SUPPLY

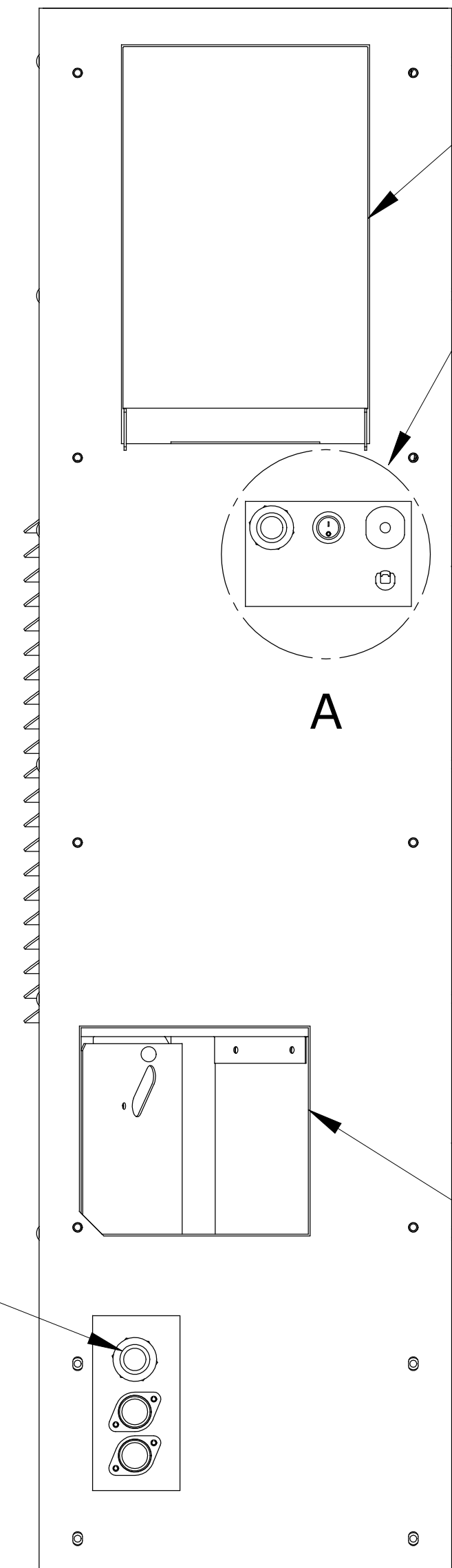
EASY HANG TABS
MAY NOT BE
PRESENT ON
OLDER MODELS



RETURN
AIR IN

15.00

480V CORD
FEEDTHROUGH
FUSES ARE
OPTIONAL



COLD AIR
SUPPLY

ELECTRIC
FEATURES

A

RETURN
AIR IN

REAR VIEW, INSIDE ENCLOSURE.
SHOWING CUTOUT TEMPLATE

	NAME	DATE		
DRAWN	atittle	06/12/08		
CHECKED			TITLE	
ENG APPR			ISC-NE-050-486	
MGR APPR			DWG NO	REV
UNLESS OTHERWISE SPECIFIED DIMENSIONS ARE IN INCHES			FILE NAME: isc_ne_050-486_dwg.dft	
SCALE:			WEIGHT:	SHEET 1 OF 1