



# ENCLOSURE AIR CONDITIONERS

## 4,000 BTUH - Narrow Edge Series

**Engineered & manufactured to endure the most difficult of environments and applications.**  
**ISC Air Conditioners will exceed environmental requirements in applications like**  
*Steel, Food Processing, Petro-Chemical, Cement, Paper & Pulp and Plastics*

### Digital Temperature Controller

- » Programmable set point and temperature operating controls
- » Visible error and/or alarm messaging
- » System status indication & keypad lockout function
- » Modbus RTU, RS485 communication

### Active Condensate Management System

- » Constant elimination of condensate
- » Increases unit efficiency by pre-cooling refrigerant

### Unit Efficiency

- » Sloped top to allow for water runoff
- » Designed with rigid chassis and seam welded shroud
- » Thoughtful interior design for easy maintenance
- » Narrow body style fits on 12" enclosure

### Unit Efficiency

- » Pressure operated blower control reduces power inrush and saves energy
- » Highly efficient compressor
- » Fully insulated & sealed cabinet
- » Thermal Expansion Valve to maintain cooling capacity over a broad ambient temperature range

### Compressor Protection System

- » High & Low refrigerant cutoffs with fault indication
- » Compressor anti short cycle protection
- » Compressor run capacitors reduce power inrush, save energy and increase compressor life



**No Water Drips**  
 from our Enclosure  
 Air Conditioners



**Made in the USA**

Indoor/Outdoor  
 NEMA Type 12, 4 and 4X Available



UL/cUL Listed; File No. SA8067

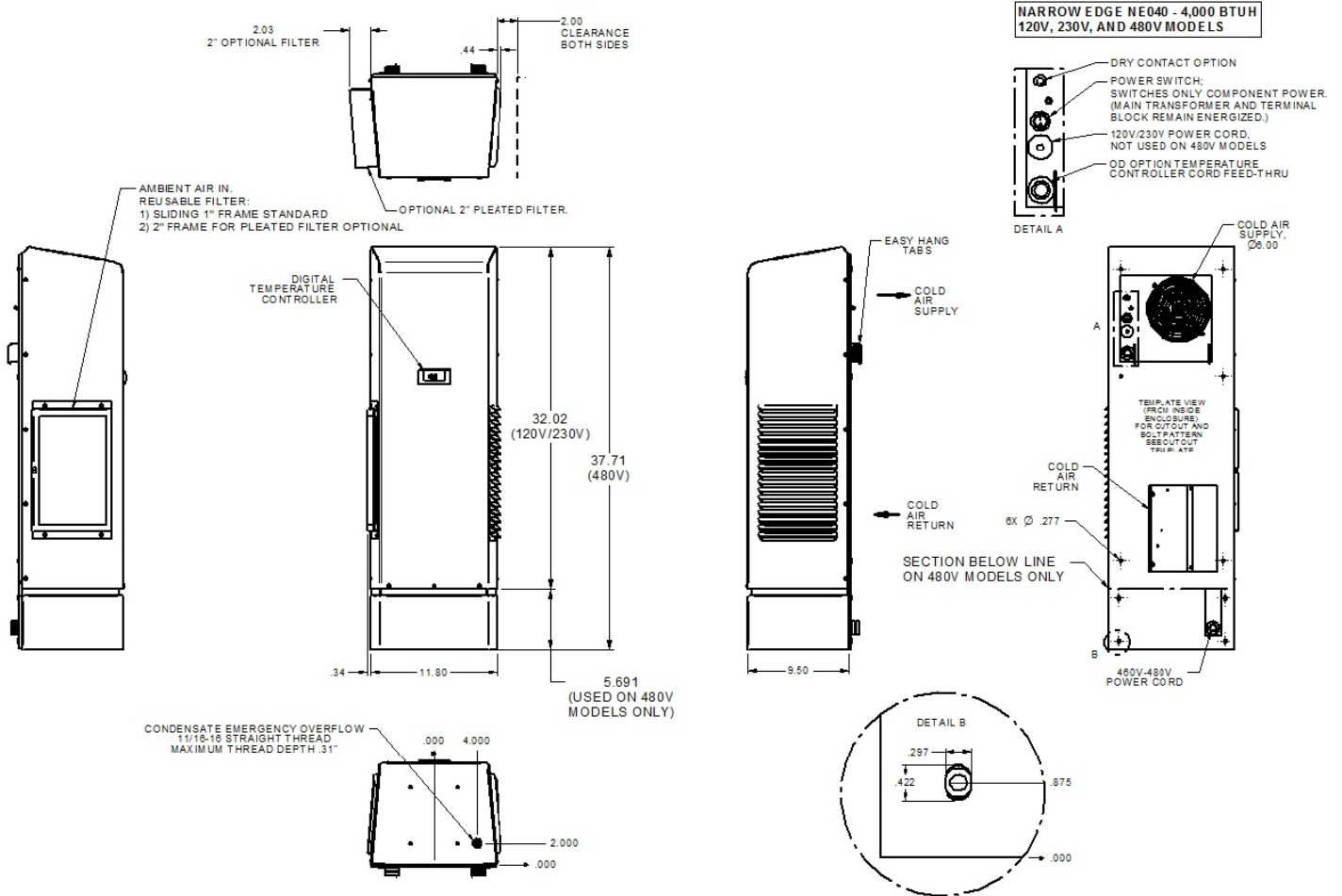
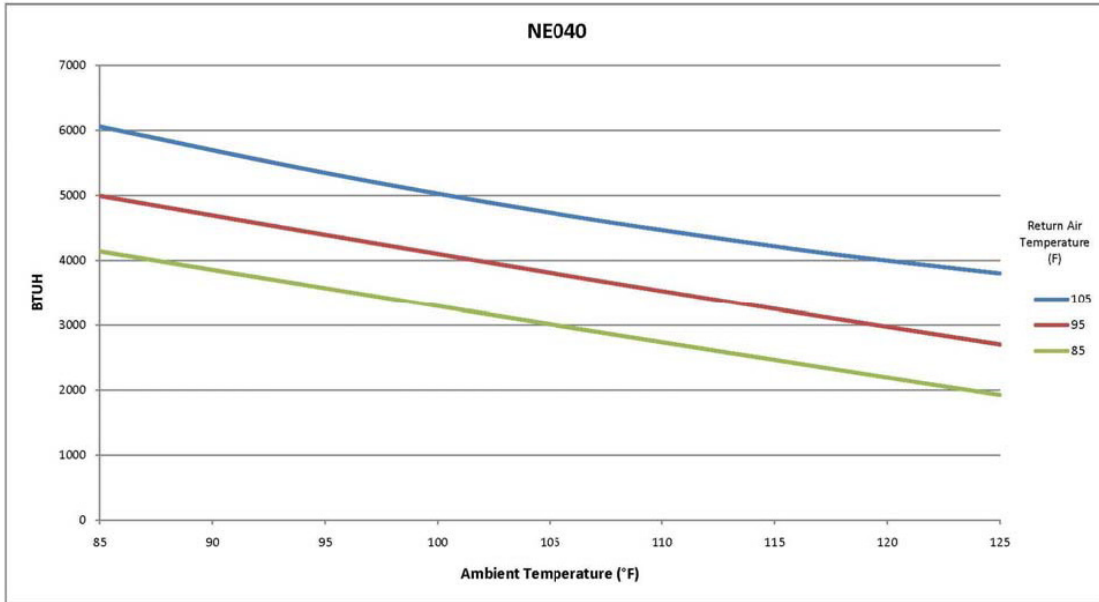
### Options

- » External Alarm Capabilities
- » Open Door Kill Switch
- » Corrosive Environment Package
- » Low Ambient Package
- » Dry Contact Remote Monitoring Options
- » Integrated Enclosure Heater System
- » Hazardous Location Units

Model	BTUH/ Hour	Material	Voltage/ Phase/Hz.	Running Amps	Max Ambient Temperature	Dimensions H x W x D	Weight (lbs.) Unit/Ship
ISC-NE-040-126-12	4,000	Powder Coated Steel	120/1/60	5.53	125°F	32" x 11.8" x 9.5"	94/111
ISC-NE-040-126-04	4,000	Powder Coated Steel	120/1/60	5.53	125°F	32" x 11.8" x 9.5"	94/111
ISC-NE-040-126-4X	4,000	Stainless Steel	120/1/60	5.53	125°F	32" x 11.8" x 9.5"	94/111
ISC-NE-040-236-12	4,000	Powder Coated Steel	230/1/60	3.07	125°F	32" x 11.8" x 9.5"	99/116
ISC-NE-040-236-04	4,000	Powder Coated Steel	230/1/60	3.07	125°F	32" x 11.8" x 9.5"	99/116
ISC-NE-040-236-4X	4,000	Stainless Steel	230/1/60	3.07	125°F	32" x 11.8" x 9.5"	99/116
ISC-NE-040-486-12	4,000	Powder Coated Steel	480/1/60	1.51	125°F	38" x 11.8" x 9.5"	123/141
ISC-NE-040-486-04	4,000	Powder Coated Steel	480/1/60	1.51	125°F	38" x 11.8" x 9.5"	123/141
ISC-NE-040-486-4X	4,000	Stainless Steel	480/1/60	1.51	125°F	38" x 11.8" x 9.5"	123/141

\*Information is Subject to Change without Notice

# NE040 Specifications



\*Information is Subject to Change without Notice