



ENCLOSURE AIR CONDITIONERS

8,000 BTUH - Wide Format Series

Engineered & manufactured to endure the most difficult of environments and applications.
ISC Air Conditioners will exceed environmental requirements in applications like
Steel, Food Processing, Petro-Chemical, Cement, Paper & Pulp and Plastics

Digital Temperature Controller

- » Programmable set point and temperature operating controls
- » Visible error and/or alarm messaging
- » System status indication & keypad lockout function
- » Modbus RTU, RS485 communication

Active Condensate Management System

- » Constant elimination of condensate
- » Increases unit efficiency by pre-cooling refrigerant

Unit Efficiency

- » Sloped top to allow for water runoff
- » Designed with rigid chassis and seam welded shroud
- » Thoughtful interior design for easy maintenance

Unit Efficiency

- » Pressure operated blower control reduces power inrush and saves energy
- » Highly efficient rotary compressor
- » Fully insulated & sealed cabinet
- » Thermal Expansion Valve to maintain cooling capacity over a broad ambient temperature range

Compressor Protection System

- » High & Low refrigerant cutoffs with fault indication
- » Compressor anti short cycle protection
- » Compressor run capacitors reduce power inrush, save energy and increase compressor life



*No Water Drips
from our Enclosure
Air Conditioners*



Made in the USA

Indoor/Outdoor
NEMA Type 12, 4 and 4X Available



UL/cUL Listed; File No. SA8067

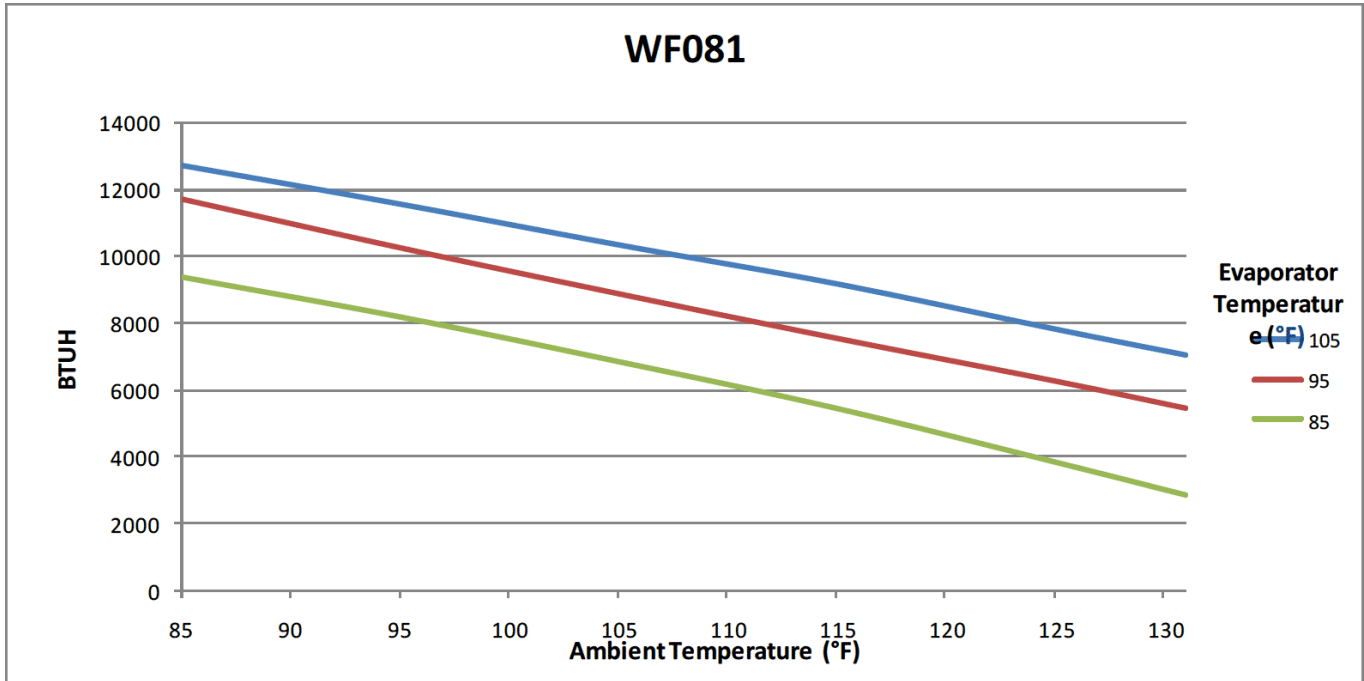
Options

- » External Alarm Capabilities
- » Open Door Kill Switch
- » Corrosive Environment Package
- » Low Ambient Package
- » Dry Contact Remote Monitoring Options
- » Integrated Enclosure Heater System
- » Hazardous Location Package

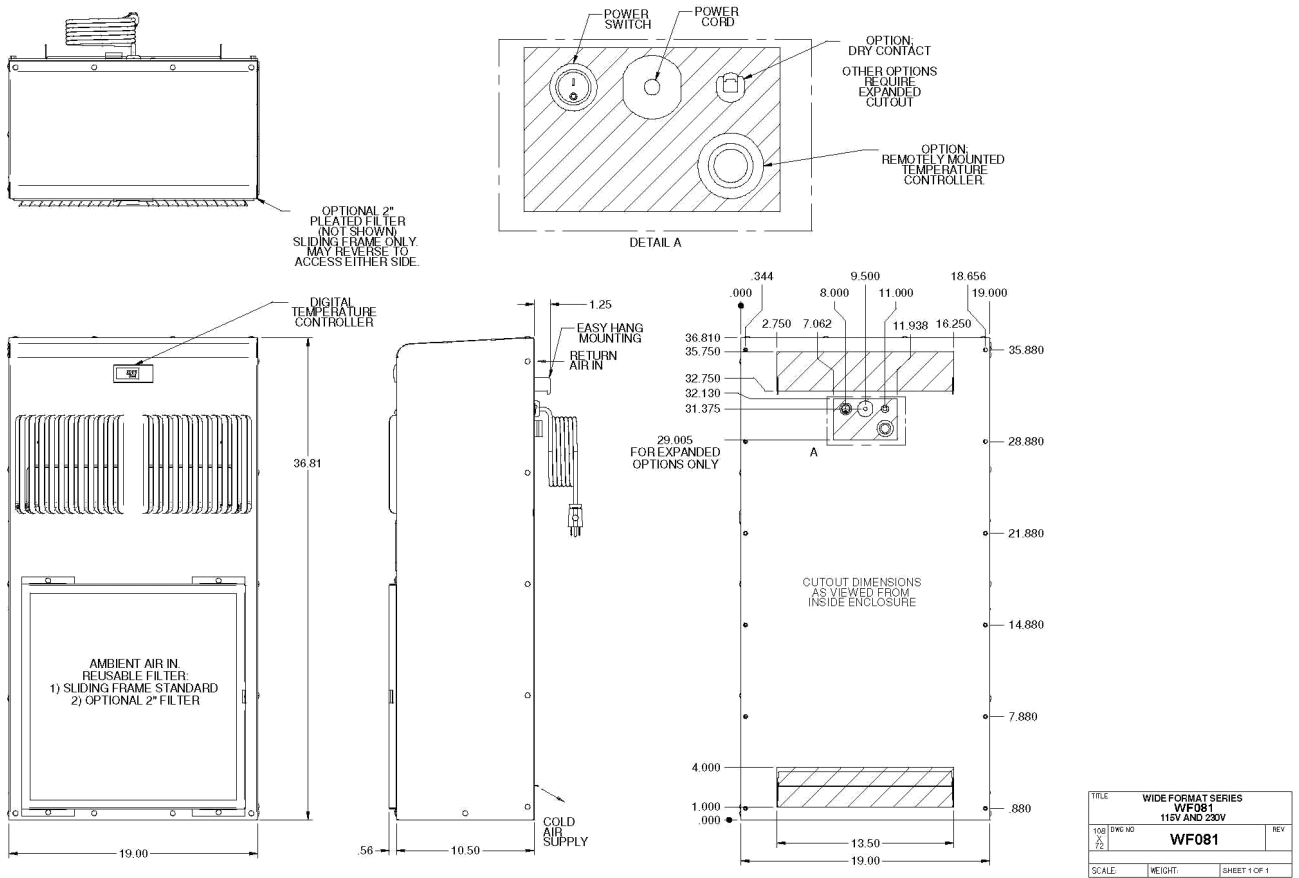
Model	BTUH/ Hour	Material	Voltage/ Phase/Hz.	Running Amps	Max Ambient Temperature	Dimensions H x W x D	Weight (lbs.) Unit/Ship
ISC-WF-081-126-12	8,000	Powder Coated Steel	120/1/60	12.3	131°F	36.81" x 19" x 10.50"	120/136
ISC-WF-081-126-04	8,000	Powder Coated Steel	120/1/60	12.3	131°F	36.81" x 19" x 10.50"	120/136
ISC-WF-081-126-4X	8,000	Stainless Steel	120/1/60	12.3	131°F	36.81" x 19" x 10.50"	120/136
ISC-WF-081-236-12	8,000	Powder Coated Steel	230/1/60	6.0	131°F	36.81" x 19" x 10.50"	145/161
ISC-WF-081-236-04	8,000	Powder Coated Steel	230/1/60	6.0	131°F	36.81" x 19" x 10.50"	145/161
ISC-WF-081-236-4X	8,000	Stainless Steel	230/1/60	6.0	131°F	36.81" x 19" x 10.50"	145/161

*Information is Subject to Change without Notice

WF081 Performance Data & Specifications



*Testing done under controlled conditions. Actual performance may vary



TITLE		WIDE FORMAT SERIES	
WF081		115V AND 230V	
100	DWG NO		REV
SCALE		WEIGHT	
		SHEET 1 OF 1	



*Information is Subject to Change without Notice